

PLANEN

GROUP

PLANEN

S.p.A.

PLANEN

METALLI E POLIMERI

PLANEN

INOX

PLANEN

INGEGNERIA

PLANEN

LINEE VITA

PLANEN

LOGISTICA

INGEGNERIA

SIPOLUP

METALLI
E POLIMERI

INGEGNERIA

SIPOLUP



 Le Tante
Forme
dell'
Acciaio

 The many
Forms
of
Steel



PLANEN
S.p.A.

S.P.A.



Costruzioni e
**Lavorazioni
Meccaniche**



Construction and
Machining



PLANEN
S.p.A.



PLANEN
S.p.A.



PLANEN
S.p.A.



PLANEN

— INGEENNERIA —

INGEGNERIA



Progettazione
architettonica

Direzione **lavori**
Sicurezza **ambiente**

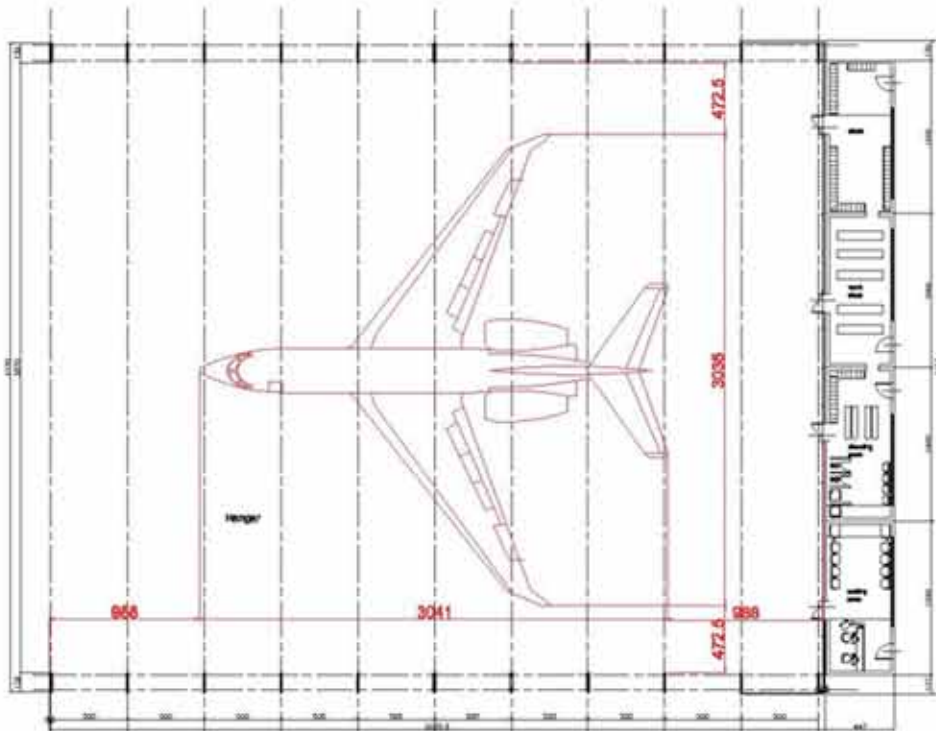


Architectural Design
costruction **management**
security **environment**



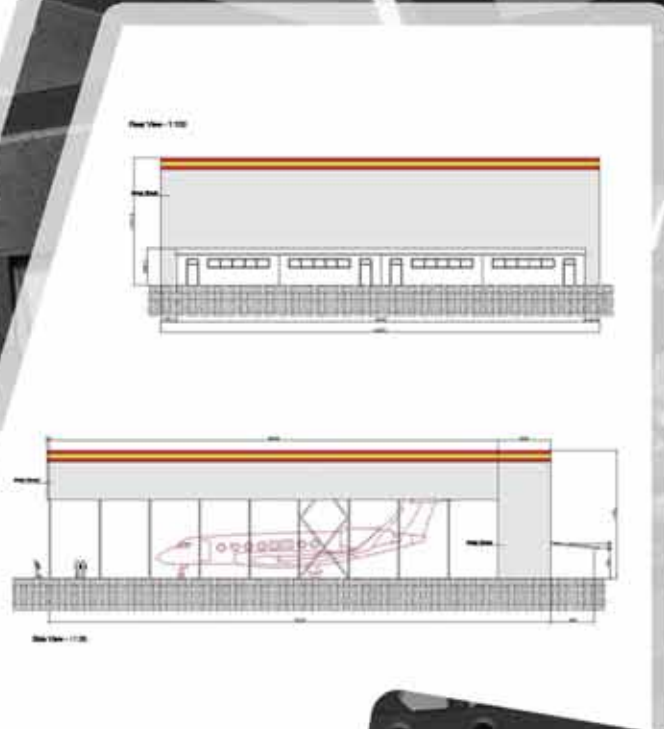
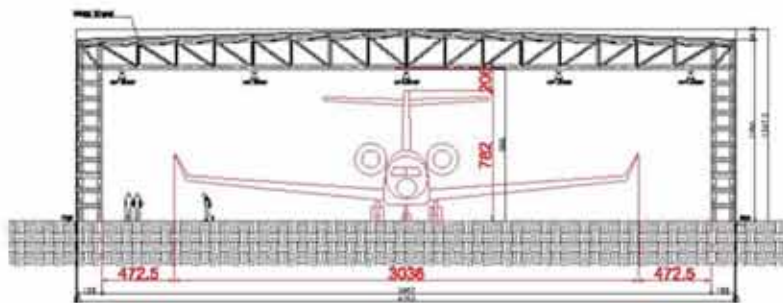
PLANEN
INGEGNERIA





Plan - 1:100

Front View - 1:30

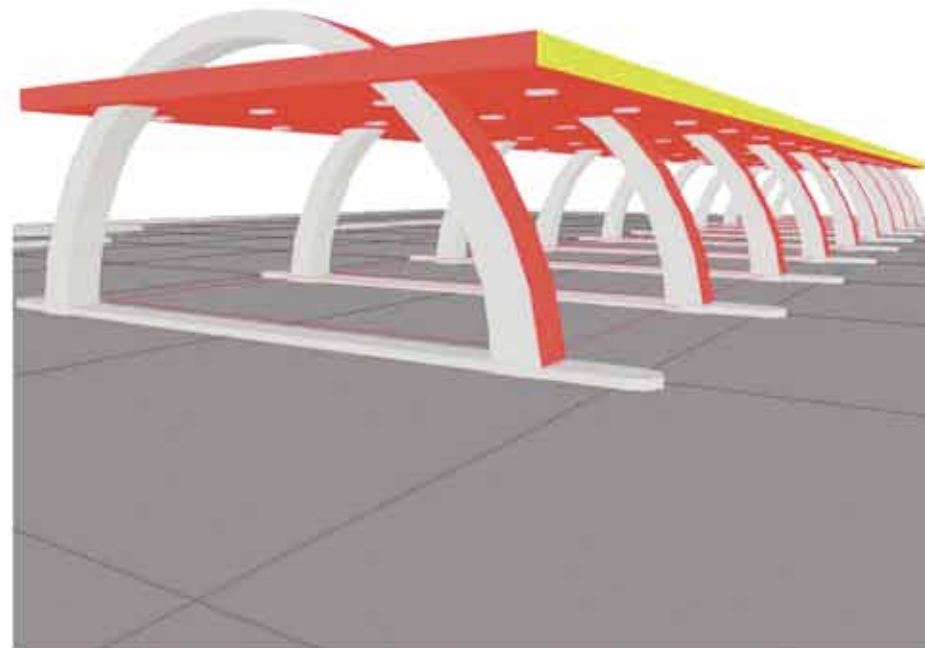
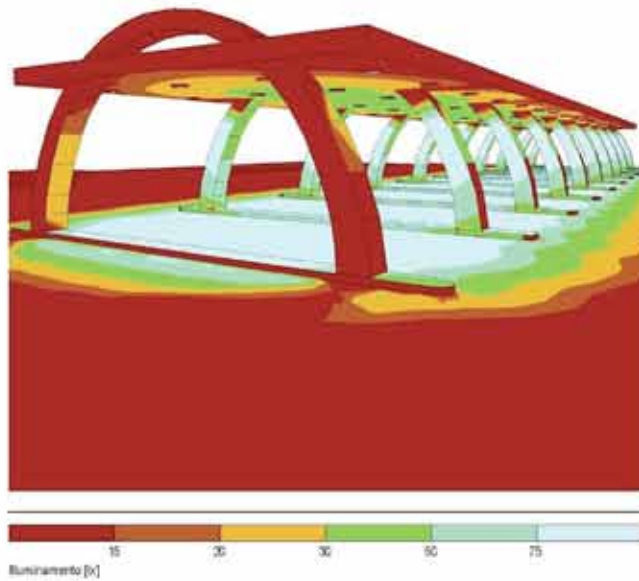


PLANEN
INGEGNERIA

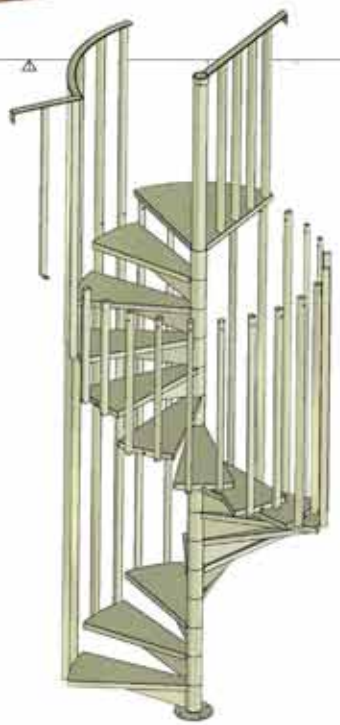
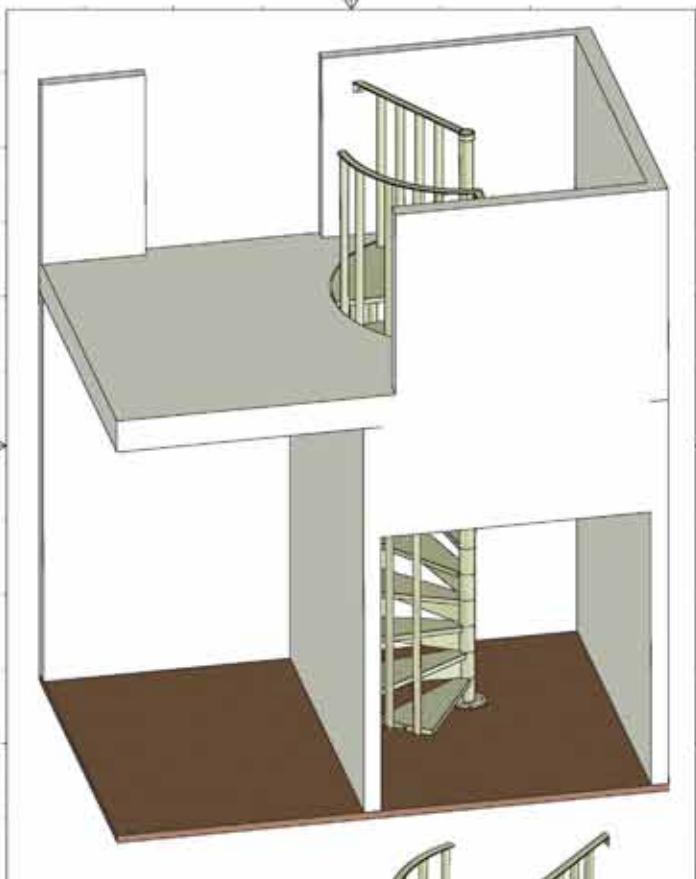
Oggetto : Illuminazione Petrol Station -
Impianto : Petrol Station -
Numero progetto : 5749

21 Descrizione, Impianto esterno

2.1.2 Rappresentazione 3D, Vista 1



PLANEN
INGEGNERIA



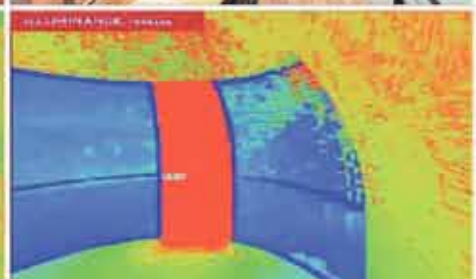
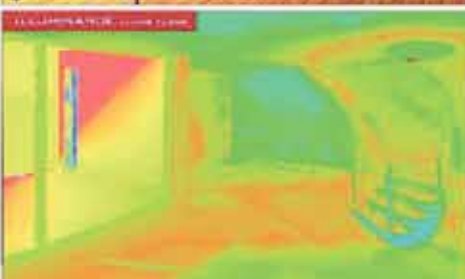
NAUTILUS

THE MAIN POINTS OF THE PROJECT

- 1 SUSTAINABLE DESIGN
- 2 CORRECT USE OF MATERIAL RESOURCES
- 3 NEW TECHNOLOGIES FOR A CONSTRUCTIVE CAPACITY
- 4 INNOVATIVE MATERIALS
- 5 ENERGY SAVING WITH A LINK BETWEEN NATURE AND TECHNOLOGY
- 6 INTELLIGENCE OF AUTOMATIONS TO BETTER PROJECT MANAGEMENT

NAUTILUS' COMPONENTS

- EDGE SHELL**
ECONOMICAL SHELL WITH SOLAR AND GLASS ELEMENTS THAT PERMITS TO STAY ON SHORELESS WITH NATURE LIKE A COASTALITY
- FEET ADJUSTABLE**
AUTOMATICAL SYSTEM TO USE SOLAR ENERGY
- BRUSH / SOLAR SYSTEM**
INTEGRATION OF THIS SYSTEM WITH PHOTOVOLTAIC ELEMENTS FOR PRODUCTION OF AUTONOMOUS ENERGY TO CORRECT USE
- ENCLOSURE**
ECONOMICAL NEXT TO TAKE ADVANTAGE OF SEA WIND
- DECKING FOR**
UTILIZATION OF WATER SEA TO CORRECT USE





PLANEN

METALLI E POLIMERI



Strutture
metalliche
in **Acciaio**
al **Carbonio**
zincate a caldo
verniciate



Metallic structures
in **Carbon Steels**
hot-dip **galvanized**
coated



PLANEN
METALLI E POLIMERI





PLANEN
METALLI E POLIMERI

KLIMA HOTEL MILANO FIERE

PLANEN
METALLI E POLIMERI





PLANEN
METALLI E POLIMERI



PLANEN
METALLI E POLIMERI

10 18 01



Coperture **coibentate**



Insulated Covers



PLANEN
METALLI E POLIMERI



Il Ferro Artistico



The Artistic Iron



PLANEN
METALLI E POLIMERI







L'eleganza
e la **durata**
dell'**Acciaio**
Inossidabile



The elegance
and **durability**
of **Stainless Steel**

Esecuzioni in
AISI 304 - AISI 316
Satinare e Lucide.

Satin and polished
production in
AISI 304
and AISI 316.





Produzione anche
su disegno
del cliente.

Production based
on customer's
design.



Scale a chiocciola,
a girno ed elicoidali
progettate su misura
per tutte
le esigenze

Spiral, open
and helical stairs
designed for
all the needs.





Abbinamento al vetro per la massima trasparenza e ridotto impatto visivo.

Combination of steel and glass for a greatest transparency and a low visual impact.





PLANEN
INOX





PLANEN
LINEE VITA

 Linee **Vita**
Certificate

 Lifelines Certified



PLANEN
LINEE VITA



Q8
easy

PLANEN
— LINEE VITA —



PLANEN
LINEE VITA



PLANEN

LOGISTICA

 Logistica

 Logistics



PLANEN
LOGISTICA





PLANEN
LOGISTICA

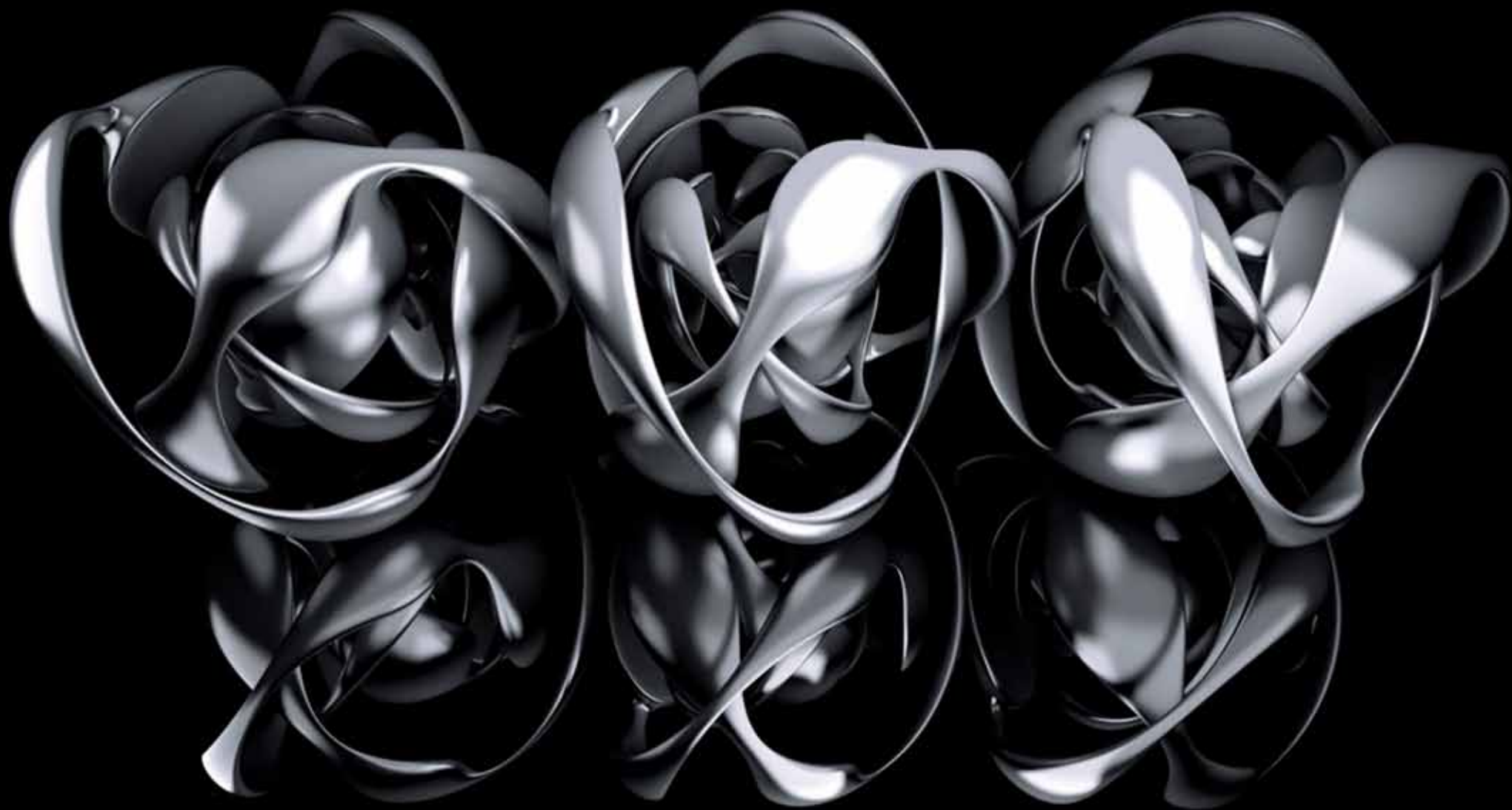


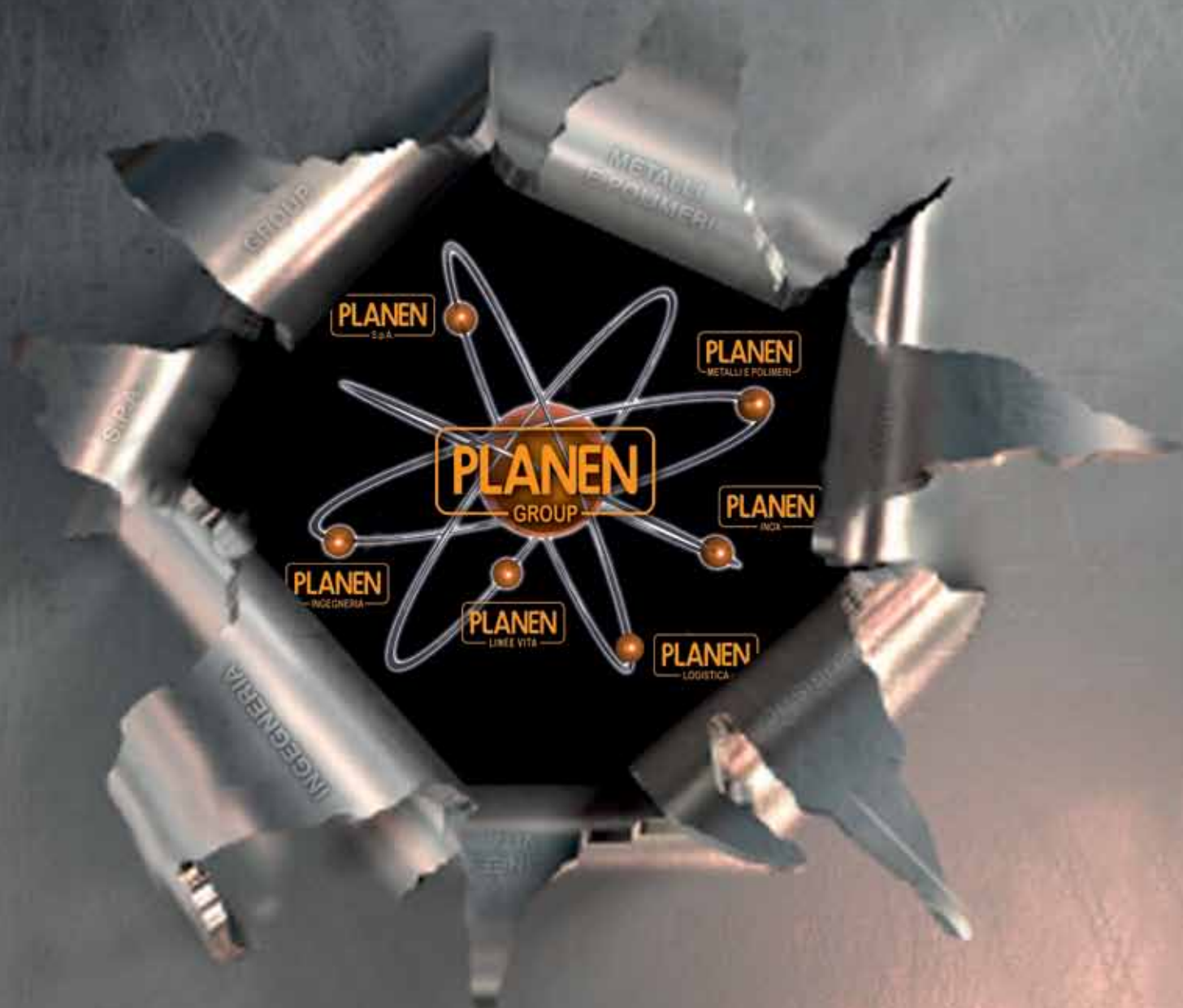


Le Tante **Forme**
dell' **Acciaio**



The many **Forms**
of **Steel**





PLANEN S.p.A.

24122 BERGAMO Via G. Paglia, 27 - Tel. +39 035.249.510 - Fax +39 035.270.600

planen@planen.it - www.planen.it